

ARCHSTONE
COURTHOUSE PLAZA





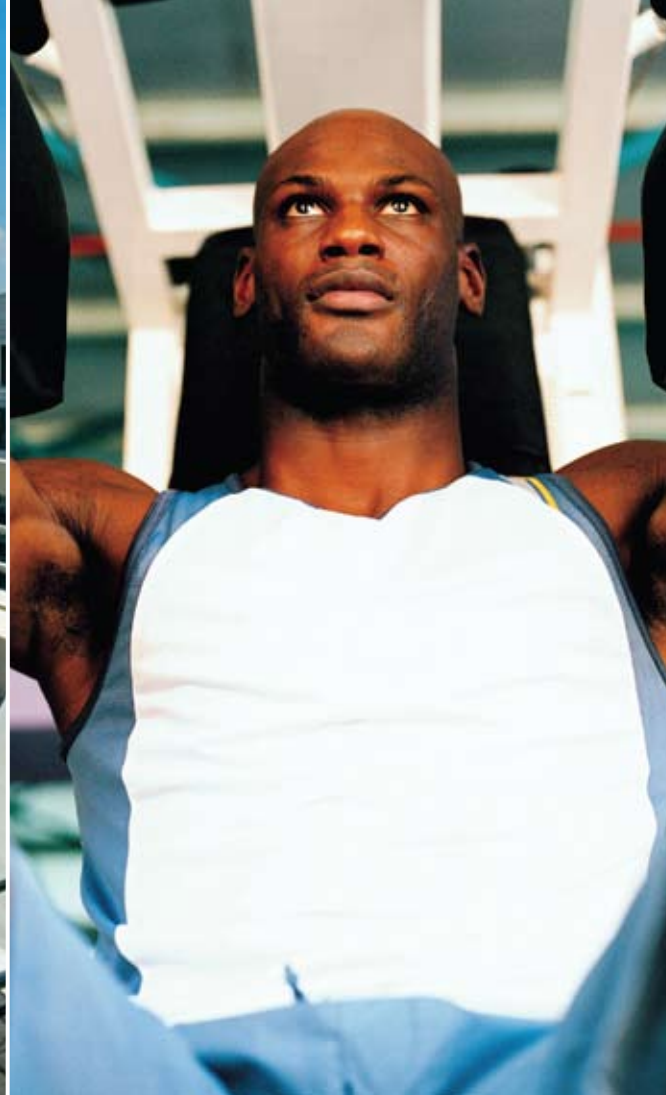
Great apartments. Great service. Guaranteed.™

Archstone redefines apartment living by blending uniquely stylish apartments in remarkable cities with high-caliber service delivered by our friendly and professional staff. From our Seal of Service™ to the modern amenities and thoughtful details found throughout our apartment residences, we work relentlessly to ensure your total satisfaction. It won't take long to realize that living with us is easier. More reliable. And notably better. Welcome to a different kind of apartment experience. Welcome home to Archstone.



Welcome to Archstone Courthouse Plaza

From our rooftop pool to our easy access to the Metro, Archstone Courthouse Plaza offers the best in comfort and convenience. Our smart and stylish award-winning apartments provide the space you need and the perks you want: rooftop deck, breathtaking views, state-of-the-art fitness center and 24-hour concierge. What's more, our fabulous location is in the heart of one of the best neighborhoods in Arlington, with abundant shopping and entertainment options right outside your front door. Great apartments, great service and the amenities you deserve. All at a location that's exactly right. Exactly where you want to be.



Everyone should have a chance to live in an apartment like this at least once in their life.

Apartment features

One-, one-bedroom with den, and two-bedroom apartments available

Open floor plans with unique angles and many windows

Eat-in kitchens*

Brand-name appliances, including frost-free refrigerators, microwaves, multi-cycle dishwashers and disposals

Pantries

Wall-to-wall carpeting

Large walk-in closets*

Linen closets

Individual washers and dryers

Central heat and air conditioning

Cable ready with high-speed Internet available

Private balconies

* Select apartments

Community amenities

Exclusive access to myArchstone.com, our resident services web site

Online rent payment

24-hour resident concierge

24-hour rooftop Caliber Sports Club™

High-tech business center

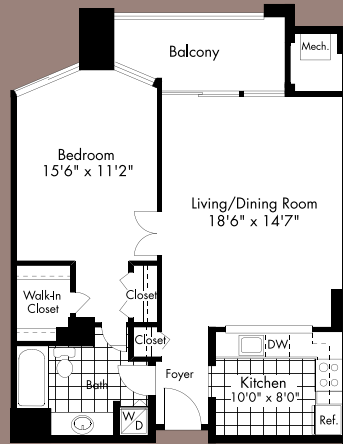
Rooftop swimming pool and sundeck with amazing views of Downtown D.C.

Dry cleaning valet service

On-site convenience store

Underground parking available





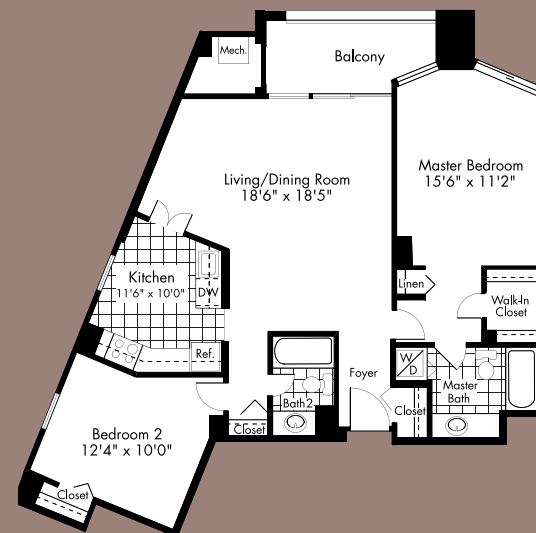
One bedroom / one bath
695-713 square feet



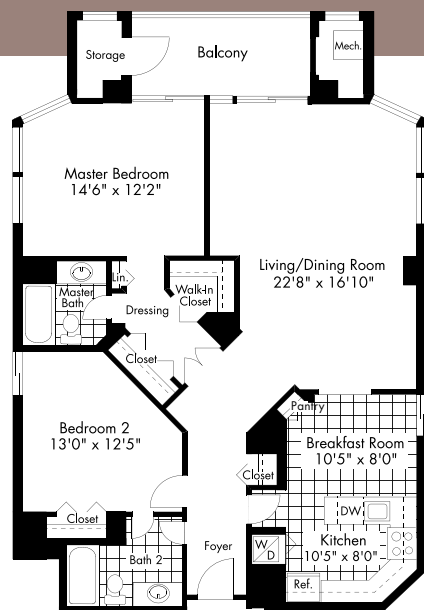
One bedroom / one bath
752 square feet



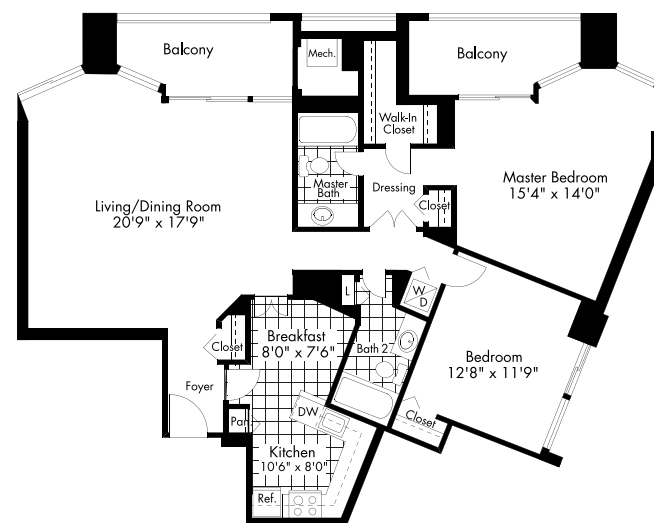
One bedroom with den, / one-and-a-half bath
1,056 square feet



Two bedroom / two bath
1,001 square feet



Two bedroom / two bath
1,209 square feet



Two bedroom / two bath
1,248 square feet

Floor plans not to scale.

Keeping you happy is our top priority. We call it our Seal of Service.™ You'll probably just call it home.

Online Lease. Visit our web site to check real-time pricing and availability, select an apartment, complete your application and get your lease, in as little as 15 minutes.

Flexible Lease Terms. You choose the length of lease that works for you.

myArchstone.com. Log on to this resident-only web site to pay your rent online, submit and track service requests, take part in periodic feedback surveys — and more!

100% Move-In Satisfaction Guarantee. If you're not completely satisfied with your apartment for any reason, you can move without penalty within the first 30 days of your lease, no questions asked.

1-Day Service Guarantee. Keeping your apartment in excellent condition is a part of our commitment to your satisfaction. When you make a service request we'll respond within 24 hours. Guaranteed.

The Relocation Guarantee. Things happen. You change jobs, fall in love, realize you can't live without the sun (or snow). Whatever the reason, we'll help you find another Archstone apartment.



Proud to be a national sponsor since 1999

A location that's exactly right. Exactly where you want to be.

Movie theater and dining at your doorstep

Steps from the Court House Metro Station

Near Clarendon shopping and D.C. nightlife

Moments from the Custis biking and jogging trails

Easy access to I-66, I-395, Route 50, Route 1
and George Washington Parkway

Getting here

From Washington, D.C.: Take Wilson Boulevard West to a left onto Courthouse Road. Turn right onto 14th Street. Archstone Courthouse Plaza is located on the right.

From I-66 East: Take Exit 71, Fairfax Drive, towards Route 120, Glebe Road. Proceed straight onto North Fairfax Drive. Bear right onto 10th Street North. Turn left onto Wilson Boulevard, which becomes Clarendon Boulevard. Archstone Courthouse Plaza is located on the right.

From the Metro: Get off at the Court House Metro stop on the Orange Line. Exit towards Courthouse Plaza. Turn left at the fountain. Archstone Courthouse Plaza is located at the back of the circle.



ARCHSTONE COURTHOUSE PLAZA

2250 Clarendon Boulevard

Arlington, Virginia 22201

Phone 703.243.8422 Fax 703.243.8475

achplaza@archstonemail.com

Lease online at CourthousePlaza.com



ARCHSTONE



ArchstoneApartments.com