

ARCHSTONE WATERFORD PLACE



## Great apartments. Great service. Guaranteed.™

Archstone redefines apartment living by blending uniquely stylish apartments in remarkable cities with high-caliber service delivered by our friendly and professional staff. From our Seal of Service™ to the modern amenities and thoughtful details found throughout our apartment residences, we work relentlessly to ensure your total satisfaction. It won't take long to realize that living with us is easier. More reliable. And notably better. Welcome to a different kind of apartment experience. Welcome home to Archstone.



Everyone should have a chance to live in an apartment like this at least once in their life.

#### Apartment features

Spacious one-, two- and three-bedroom apartments  
Hardwood floors\*  
Deluxe kitchens with modern appliances, including dishwashers and refrigerators with icemakers  
Breakfast bars and pantries\*  
Large walk-in closets\*  
Linen closets\*  
Private patios and balconies\*  
Ceiling fans  
Central heat  
Fireplaces  
Cable ready  
High-speed Internet access  
Individual washers and dryers  
Full size laundry room  
Storage

#### Community features

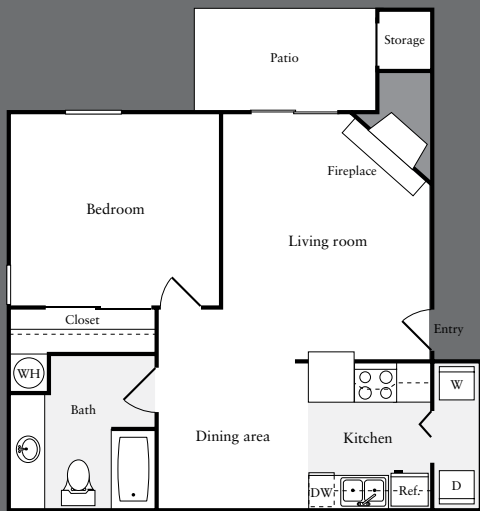
Pet-friendly  
Exclusive access to myArchstone.com, our resident services website  
24-hour fitness center  
Two sparkling swimming pools  
Indoor spa  
Complimentary WiFi hotspot  
Business center  
Club room  
Beautiful landscaping  
Barbeque grills, picnic tables, park benches, recreation area and playscape  
Tennis and racquetball court  
Covered and garage parking

\* Select apartments

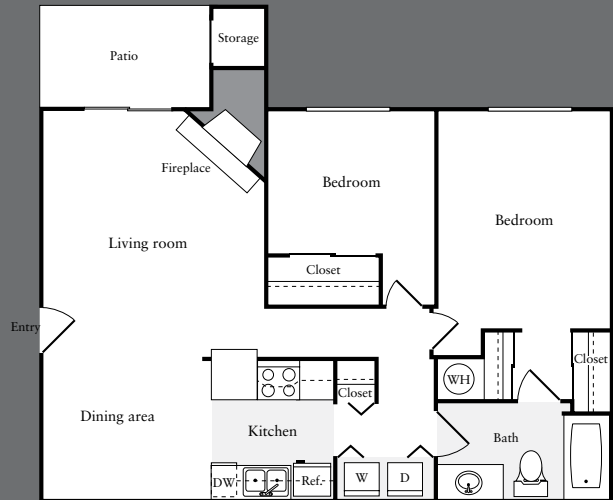
ARCHSTONE



ArchstoneApartments.com



One bedroom / one bath  
669 – 692 square feet



Two bedroom / one bath  
884 – 928 square feet



Two bedroom / two bath  
908 – 930 square feet



Three bedroom / two bath  
1,208 – 1,285 square feet



Keeping you happy is our top priority. We call it our Seal of Service.™ You'll probably just call it home.

**Online Lease.** Visit our website to check real-time pricing and availability, select an apartment, complete your application and get your lease, in as little as 15 minutes.

**Flexible Lease Terms.** You choose the length of lease that works for you.

**myArchstone.com.** Pay rent online, submit and track service requests, take part in periodic feedback surveys – and more.

**100% Move-In Satisfaction Guarantee.** If you're not completely satisfied with your apartment, you can move without penalty within the first 30 days of your lease, no questions asked.

**1-Day Service Guarantee.** When you make a service request we'll respond within 24 hours. Guaranteed.

**The Relocation Guarantee.** Things happen. You change jobs, fall in love, realize you can't live without the sun (or snow) – whatever the reason, we'll help you find another Archstone apartment. If you need to move out of the area, you'll have peace of mind with the Archstone relocation services.



Proud to be a National Partner since 1999

## A location that's exactly right. Exactly where you want to be.

Near downtown Woodinville, Woodinville Wine Country and the Burke-Gilman Trail

Close to Alderwood and Bellevue Square Malls

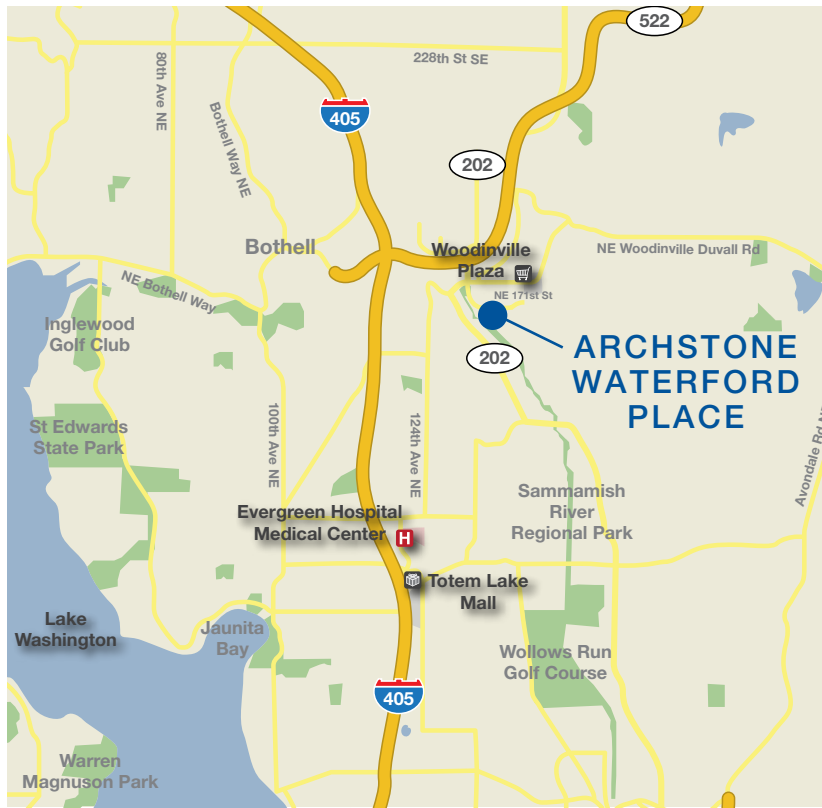
Convenient commute to major employers such as Microsoft, Boeing and Red Hook

Study at nearby Cascadia Community College

Steps from beautiful hiking, biking and nature trails

## Getting here

From I-405: Take the Woodinville-Monroe exit (Highway 522) eastbound. Take the first Woodinville exit and turn right on Highway 202. Proceed along 175th Street to NE 171st Street. Archstone Waterford Place is located on the right.



## ARCHSTONE WATERFORD PLACE

13305 Northeast 171st Street

Woodinville, Washington 98072

Phone 425.483.3444 Fax 425.485.6622

[waterfordplace@archstonemail.com](mailto:waterfordplace@archstonemail.com)

Lease online at [ArchstoneWaterfordPlace.com](http://ArchstoneWaterfordPlace.com)



# ARCHSTONE

ArchstoneApartments.com