

ARCHSTONE EMERALD PARK





## Great apartments. Great service. Guaranteed.™

Archstone redefines apartment living by blending uniquely stylish apartments in remarkable cities with high-caliber service delivered by our friendly and professional staff. From our Seal of Service™ to the modern amenities and thoughtful details found throughout our apartment residences, we work relentlessly to ensure your total satisfaction. It won't take long to realize that living with us is easier. More reliable. And notably better. Welcome to a different kind of apartment experience. Welcome home to Archstone.



Everyone should have a chance to live in an apartment like this at least once in their life.

#### Apartment features

Spacious one-, two- and three-bedroom apartments

Modern appliances, including frost-free refrigerators with icemakers, gas cooking, microwave ovens and disposals

Granite countertops\*

Large walk-in closets

Gas fireplaces\*

Large private balconies

Individual washers and dryers

Central heat and air conditioning

Oversized bathtubs

Computer alcoves

Laminate wood flooring\*

Cable ready with high-speed Internet available

#### Community features

Pet-friendly

Exclusive access to myArchstone.com, our resident services website

State-of-the-art fitness center

Sparkling pool

Year-round spa

Complimentary WiFi hotspots

Barbeque grills and picnic tables

Extra outdoor storage available

Remote controlled access gate

Covered parking

Car care facility

\* Select apartments



# ARCHSTONE



ArchstoneApartments.com



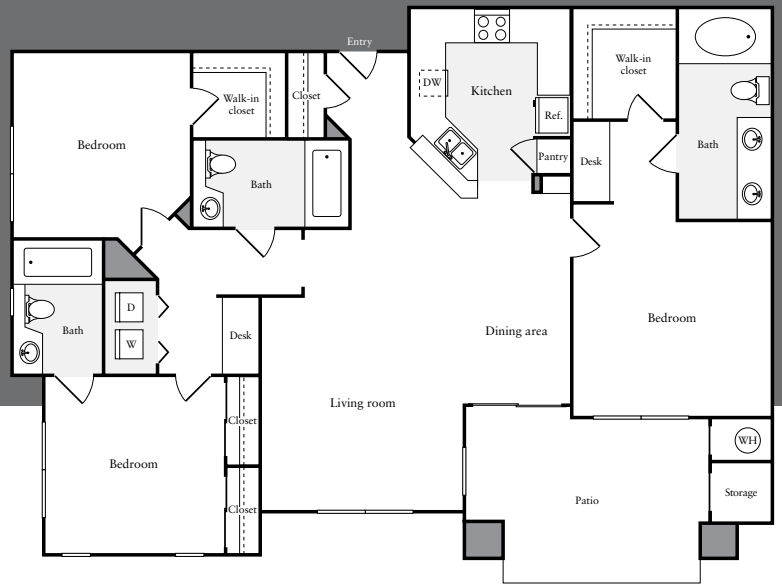
One bedroom / one bath  
796 square feet



Two bedroom / two bath  
1,007 square feet



Two bedroom / two bath  
1,092 square feet



Three bedroom / three bath  
1,305 square feet



Keeping you happy is our top priority. We call it our Seal of Service.™ You'll probably just call it home.

**Online Lease.** Visit our website to check real-time pricing and availability, select an apartment, complete your application and get your lease, in as little as 15 minutes.

**Flexible Lease Terms.** You choose the length of lease that works for you.

**myArchstone.com.** Pay rent online, submit and track service requests, take part in periodic feedback surveys – and more.

**100% Move-In Satisfaction Guarantee.** If you're not completely satisfied with your apartment, you can move without penalty within the first 30 days of your lease, no questions asked.

**1-Day Service Guarantee.** When you make a service request we'll respond within 24 hours. Guaranteed.

**The Relocation Guarantee.** Things happen. You change jobs, fall in love, realize you can't live without the sun (or snow) – whatever the reason, we'll help you find another Archstone apartment. If you need to move out of the area, you'll have peace of mind with the Archstone relocation services.



Proud to be a National Partner since 1999

## A location that's exactly right. Exactly where you want to be.

Walking distance to Hacienda Crossing  
Shopping Center and Regal Cinemas & IMAX

Near Stoneridge Shopping Center and Dublin  
Sports Grounds

Walking distance to Dougherty Elementary and Emerald  
Glen Park featuring a state-of-the-art skate park, tennis  
courts and basketball courts

Close to BART

Easy access to Highways 580 and 680

## Getting here

From Highway 580: Exit Hacienda Drive and proceed  
north past Dublin Boulevard. Archstone Emerald Park is  
on the right.

## ARCHSTONE EMERALD PARK

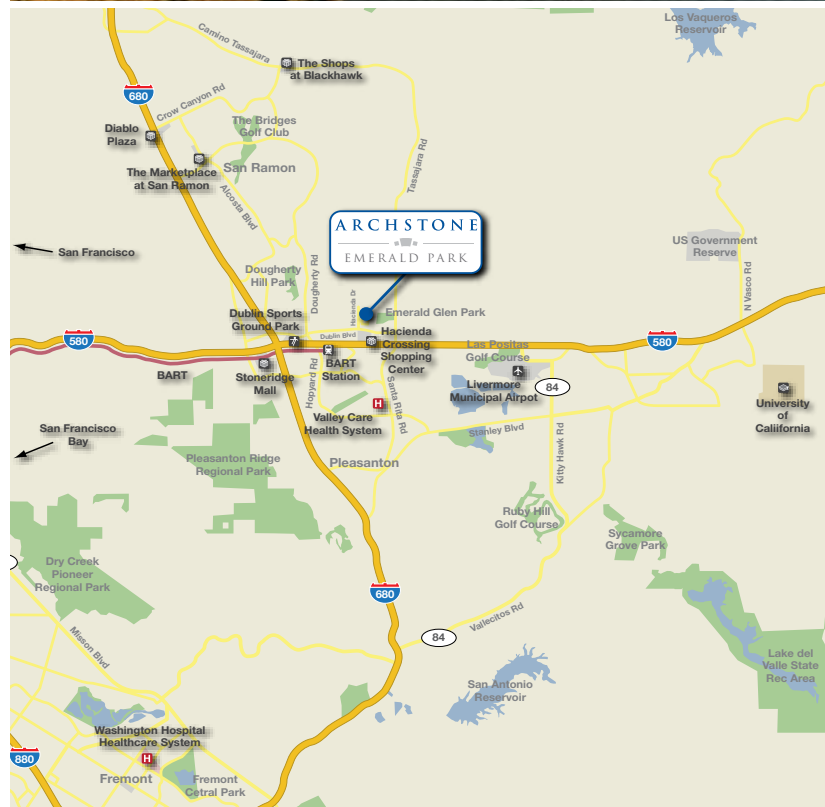
5095 Haven Place

Dublin, California 94568

Phone 925.560.1600 Fax 925.560.1603

[emeraldpark@archstonemail.com](mailto:emeraldpark@archstonemail.com)

Lease online at [ArchstoneEmeraldPark.com](http://ArchstoneEmeraldPark.com)



# ARCHSTONE



[ArchstoneApartments.com](http://ArchstoneApartments.com)