



TUNLAW GARDENS



Great apartments. Great service. Guaranteed.™

Charles E. Smith redefines apartment living by blending uniquely stylish apartments in remarkable cities with high-caliber service delivered by our friendly and professional staff. From our unconditional Seal of Service™ to the modern amenities and thoughtful details found throughout our apartment residences, we work relentlessly to ensure your total satisfaction. It won't take long to realize that living with us is easier. More reliable. And notably better. Welcome to a different kind of apartment experience. Welcome home to Charles E. Smith.



Welcome to Tunlaw Gardens

In the 1930s, Art Deco was king, floor plans were gloriously spacious and exquisitely stylish details could be found at every turn. That's what makes Tunlaw Gardens so perfect. Built in 1939, this secluded community brings you the best of both worlds: decidedly Deco design and a perfect location in the prestigious Glover Park neighborhood. Here, you're just minutes from Wisconsin Avenue, Georgetown and Embassy Row – considered to be some of the best dining and shopping in the District. What's more, we're one of the few dog- and cat-friendly communities in the area. Great apartments, great service. All at a location that's exactly right, exactly where you want to be.



Everyone should have a chance to live in an apartment like this at least once in their life.

Apartment features

Deluxe eat-in kitchens with stainless steel sinks

Modern appliances, including frost-free refrigerators, gas ovens, microwaves, multi-cycle dishwashers and disposals

Spacious floor plans

Large walk-in closets*

Linen closets

Baths with pedestal sinks and Art Deco tiling

Wall-to-wall carpet or hardwood flooring

High ceilings with crown molding

Arched doorways

Ceiling fans*

New! Energy efficient windows

Courtyard and Glover Park views

Individually controlled air conditioning

Cable ready with high-speed Internet available

* Select apartments

Community amenities

Pet-friendly*

Exclusive access to mySmithAdvantage.com, our resident services web site

Online rent payment

Controlled access

Clothes care facility

Dry cleaning pick-up available

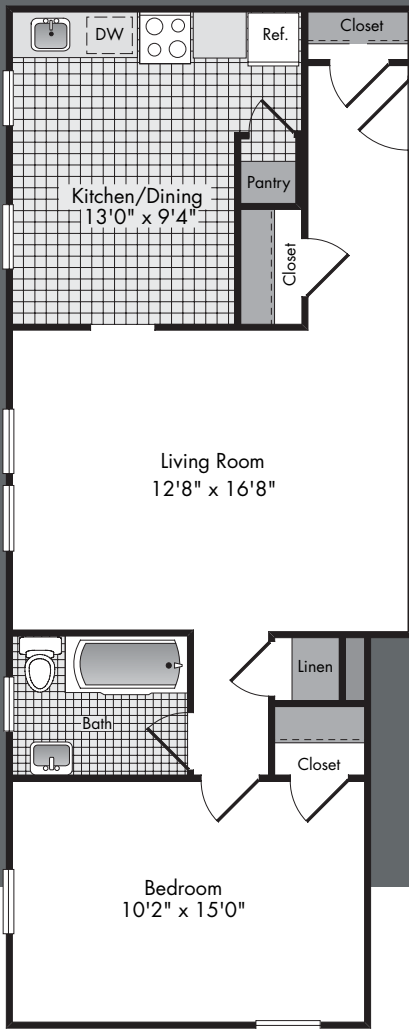
Bike storage available

Additional storage available

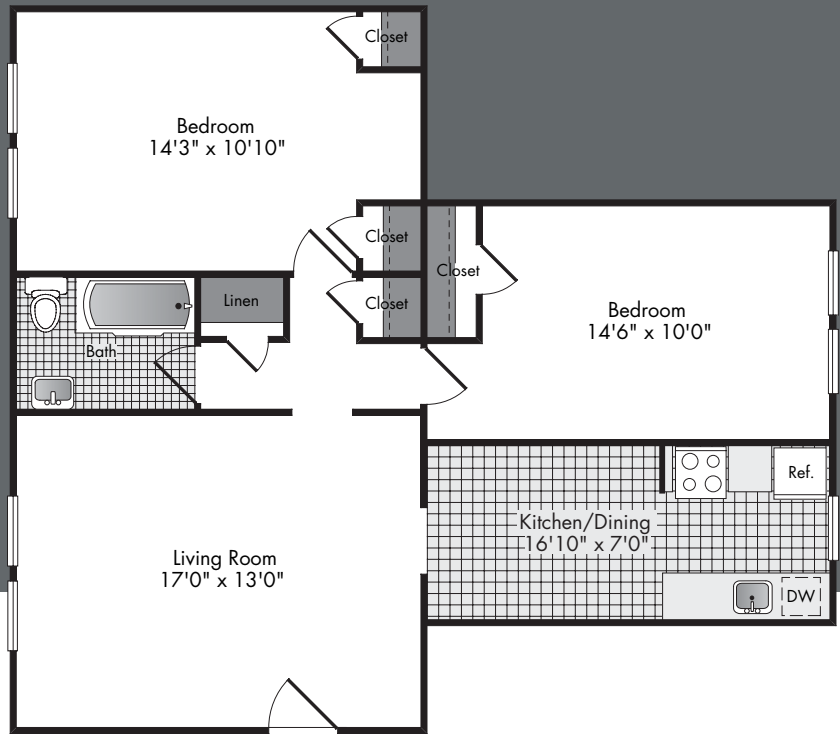
Reserved parking available

Beautiful landscaping with mature trees

* Restrictions apply. See leasing consultant for details.



One bedroom / one bath
800 square feet



Two bedroom / one bath
900-950 square feet

Keeping you happy is our top priority. We call it our Seal of Service.™ You'll probably just call it home.

Online Lease. Visit our web site to check real-time pricing and availability, select an apartment, complete your application and get your lease, in as little as 15 minutes.

Flexible Lease Terms. You choose the length of lease that works for you.

mySmithAdvantage.com. Log on to this resident-only web site to pay your rent online, submit and track service requests, take part in periodic feedback surveys – and more!

100% Move-In Satisfaction Guarantee. If you're not completely satisfied with your apartment for any reason, you can move without penalty within the first 30 days of your lease, no questions asked.

1-Day Service Guarantee. Keeping your apartment in excellent condition is a part of our commitment to your satisfaction. When you make a service request we'll respond within 24 hours. Guaranteed.

The Relocation Guarantee. Things happen. You change jobs, fall in love, realize you can't live without the sun (or snow). Whatever the reason, we'll help you find another Archstone or Charles E. Smith apartment.

Customer Service Connection. For your comments and questions, contact us at 1.877.ARCHSTONE-SMITH or customers@archstonesmith.com.



Proud to be a national sponsor since 1999

A location that's exactly right. Exactly where you want to be.

Excellent Glover Park location, minutes from entertainment, cafés and fine dining

Near local universities such as Georgetown, American and George Washington

Historic Cathedral Heights and Embassy Row only a short walk away

Prestigious Georgetown area located 1/2 mile away

Quiet residential neighborhood

Walk to the grocery store, post office and great shopping

Convenient to numerous Metrobus lines

Getting here

From I-495: Take Wisconsin Avenue south. Turn right onto Calvert Street, NW. Go one block and turn right onto Tunlaw Road, NW. Go one block and turn left onto Davis Place, NW.

From I-66: Exit Rosslyn/Key Bridge. Turn left onto Lynn Street and go over Key Bridge. Turn right onto M Street. Turn left onto 34th Street. Take 34th Street to Wisconsin Avenue and turn left. Take Wisconsin Avenue north to Calvert Street and turn left. Take Calvert Street one block to Tunlaw Road and turn right. Take Tunlaw Road one block to Davis Place and turn left.

TUNLAW GARDENS

3903 Davis Place, NW

Washington, D.C. 20007

Phone 202.337.7758 Fax 202.337.4596

tunlawgardens@archstonesmith.com

Lease online at TunlawGardens.com



Charles E. Smith
SmithApartments.com

Archstone and Charles E. Smith are brands of Archstone-Smith, unified by a commitment to provide great apartments and great service, guaranteed.