

A multi-story apartment building with a modern, classical architectural style. The building features a mix of light-colored stone or concrete panels and darker window frames. The windows are arranged in a grid pattern, and some have small balconies. The building is illuminated from within, and the sky is a deep blue. In the foreground, there is a landscaped area with a sign, a bench, and some plants. A set of stairs with a metal railing is visible on the left side of the building.

ARCHSTONE CAMBRIDGE PARK

ARCHSTONE  
CAMBRIDGE PARK  
APARTMENTS  
617-497-7368  
[ArchstoneCambridgePark.com](http://ArchstoneCambridgePark.com)



## Great apartments. Great service. Guaranteed.™

Archstone redefines apartment living by blending uniquely stylish apartments in remarkable cities with high-caliber service delivered by our friendly and professional staff. From our Seal of Service™ to the modern amenities and thoughtful details found throughout our apartment residences, we work relentlessly to ensure your total satisfaction. It won't take long to realize that living with us is easier. More reliable. And notably better. Welcome to a different kind of apartment experience. Welcome home to Archstone.



## Archstone CambridgePark

In the heart of Cambridge, situated perfectly between the Alewife MBTA subway station and CambridgeSide Galleria, lies an apartment community that brings the best of Cambridge to your doorstep. Great apartments, great service and the amenities you deserve – with an array of shopping, dining, arts, and entertainment nearby. All at a location that's exactly right, exactly where you want to be.



**Everyone should have a chance to live in an apartment like this at least once in their life.**

#### **Apartment features**

Spacious studio, one-, and two-bedroom apartments

Contemporary kitchens with built-in microwaves

Custom maple cabinetry with brushed nickel hardware

Wall-to-wall carpeting

Large walk-in closets\*

Walk-in showers\*

Individual washers and dryers

Wired with multiple phone lines

Cable ready with high-speed Internet available

\* [Select apartments](#)

#### **Community amenities**

Exclusive access to myArchstone.com, our resident services web site

Cat-friendly

Club Suite available for private gatherings

Wi-Fi hot spots available

24-hour fitness center with free weights and sauna

Resort-style heated swimming pool and hot tub

Charcoal grills

Beautiful landscaping

Upgraded hallways featuring new paint and carpeting

Dry cleaning valet service

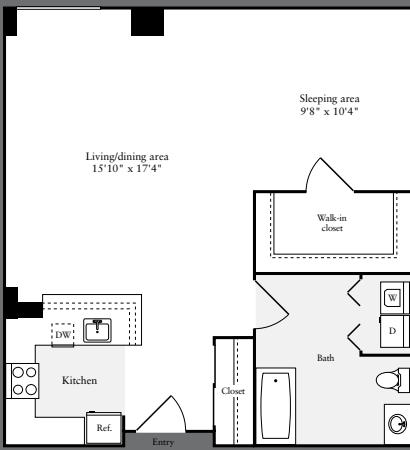
24-hour concierge service

Bike storage

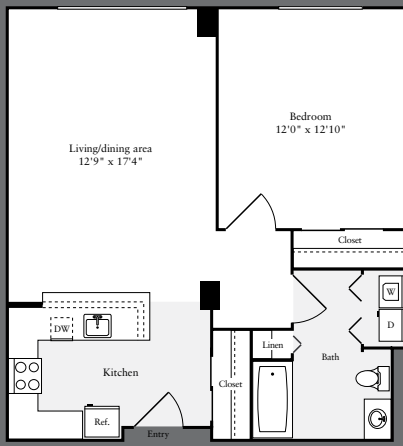
Additional storage available

Gated entry

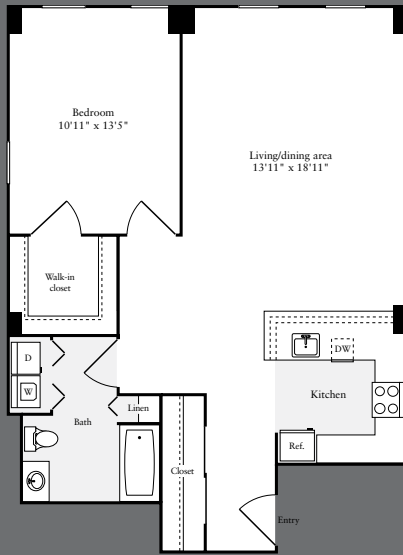
Garage parking



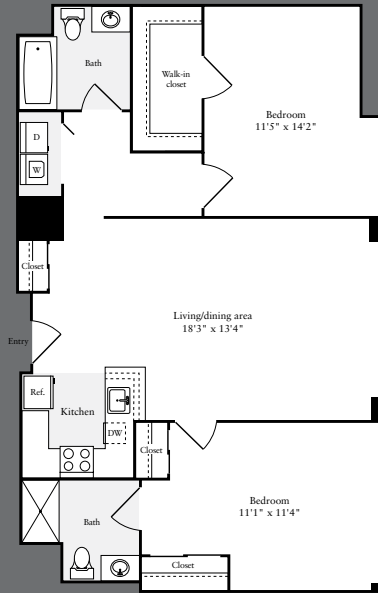
Studio / one bath  
698 square feet



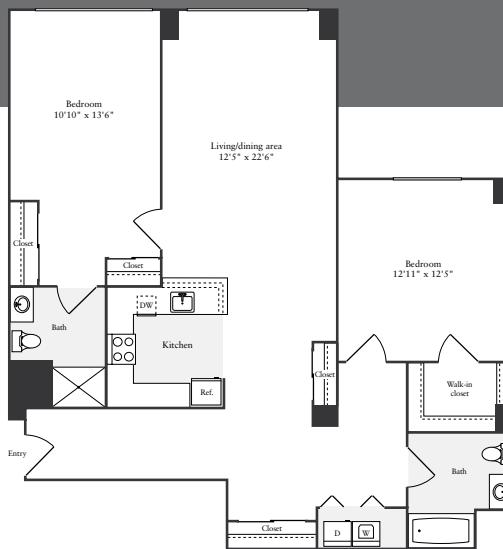
One bedroom / one bath  
716 square feet



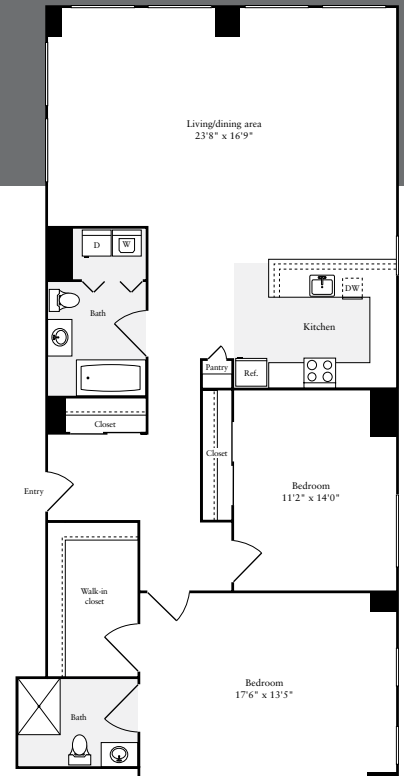
One bedroom / one bath  
870 square feet



Two bedroom / two bath  
1,155 square feet



Two bedroom / two bath  
1,320 square feet



Two bedroom / two bath  
1,495 square feet

## Keeping you happy is our top priority. We call it our Seal of Service.™ You'll probably just call it home.

**Online Lease.** Visit our web site to check real-time pricing and availability, select an apartment, complete your application and get your lease, in as little as 15 minutes.

**Flexible Lease Terms.** You choose the length of lease that works for you.

**myArchstone.com.** Log on to this resident-only web site to pay your rent online, submit and track service requests, take part in periodic feedback surveys – and more!

**100% Move-In Satisfaction Guarantee.** If you're not completely satisfied with your apartment for any reason, you can move without penalty within the first 30 days of your lease, no questions asked.

**1-Day Service Guarantee.** Keeping your apartment in excellent condition is a part of our commitment to your satisfaction. When you make a service request we'll respond within 24 hours. Guaranteed.

**The Relocation Guarantee.** Things happen. You change jobs, fall in love, realize you can't live without the sun (or snow). Whatever the reason, we'll help you find another Archstone apartment.



Proud to be a national sponsor since 1999

## A location that's exactly right. Exactly where you want to be.

Just eleven miles from Logan International Airport

Nearby shopping and dining at CambridgeSide Galleria, Harvard Square, Copley Mall in downtown Boston and trendy Newbury Street

Close to Harvard University, MIT, Lesley University, Cambridge College, Suffolk University, Boston University, Boston College and Tufts University

Easy access to Routes 2, 3, 16, 128, I-93 and I-90

### Getting here

From I-93 S: Take exit 32 Route 60 Medford Square/ Malden. Take first exit on Route 60 and left on Main Street. Turn right onto Mystic Valley Parkway to Route 16 West. Turn right onto CambridgePark Drive.

From I-93 N: Take exit 31 Mystic Valley Parkway to Route 16 West. Approximately 3.5 miles from the exit, turn right onto CambridgePark Drive.

## ARCHSTONE CAMBRIDGEPARK

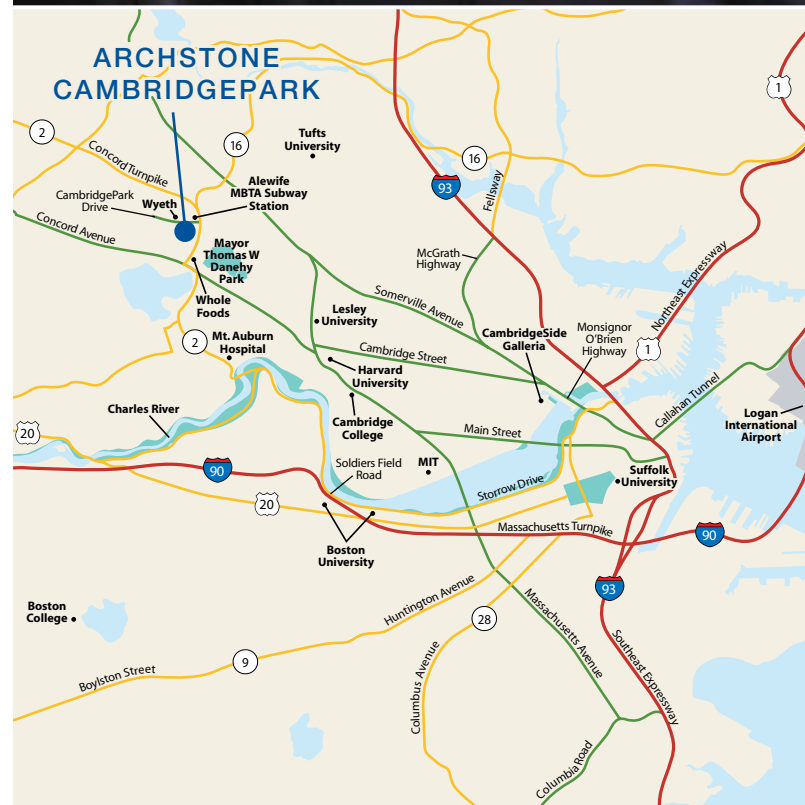
30 CambridgePark Drive

Cambridge, Massachusetts 02140

Phone 617.497.7368 Fax 617.497.5588

cambridgepark@archstonemail.com

Lease online at [ArchstoneCambridgePark.com](http://ArchstoneCambridgePark.com)



# ARCHSTONE



ArchstoneApartments.com