

CRYSTAL TOWERS





Great apartments. Great service. Guaranteed.™

Archstone redefines apartment living by blending uniquely stylish apartments in remarkable cities with high-caliber service delivered by our friendly and professional staff. From our Seal of Service™ to the modern amenities and thoughtful details found throughout our apartment residences, we work relentlessly to ensure your total satisfaction. It won't take long to realize that living with us is easier. More reliable. And notably better. Welcome to a different kind of apartment experience. Welcome home to Archstone.



Welcome to Crystal Towers

Crystal Towers represents the best in vintage styling and modern amenities to offer you a truly unique apartment experience. Here, you'll find unusually large floor plans and bask in the shade of 40-year-old trees that surround our decidedly luxurious cascading pool nestled in a gorgeous park-like setting. Our avant-garde amenities (Click! Café™ Internet Lounge and Caliber Sports Club™, to name a few) are only outdone by our unbeatable location that brings the District and the world (Reagan National is just a mere Metro stop away) literally to your front door. Great apartments, great service and the amenities you deserve. All at a location that's exactly right, exactly where you want to be.



Everyone should have a chance to live in an apartment like this at least once in their life.

Apartment features

Deluxe kitchens with modern appliances, including refrigerators with icemakers*, microwaves*, multi-cycle dishwashers and disposals

Large walk-in closets

Private patios and balconies

Individual washers and dryers*

Spacious linen closets

Cable ready with high-speed Internet available

Penthouse apartments available

* [Select apartments](#)

Community amenities

Pet-friendly*

Exclusive access to mySmithAdvantage.com, our resident services web site

Online rent payment

Rooftop Caliber Sports Club™

Rooftop residents' party room

Click! Café™

High-tech business center

Split-level cascading swimming pool with sundeck

Barbeque grills and picnic tables

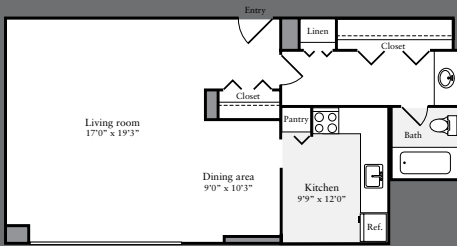
Park inspired courtyard with reflection fountain, benches and terrace

24-hour resident concierge

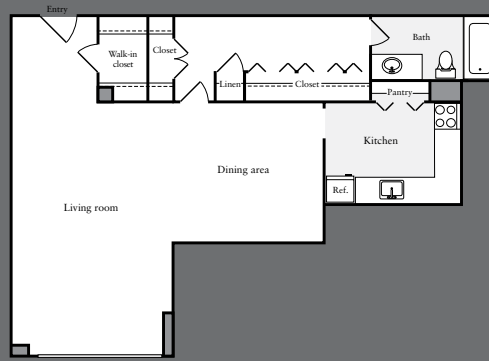
Rental storage available

Garage parking available

* Restrictions apply. See leasing consultant for details.



Efficiency
606 square feet



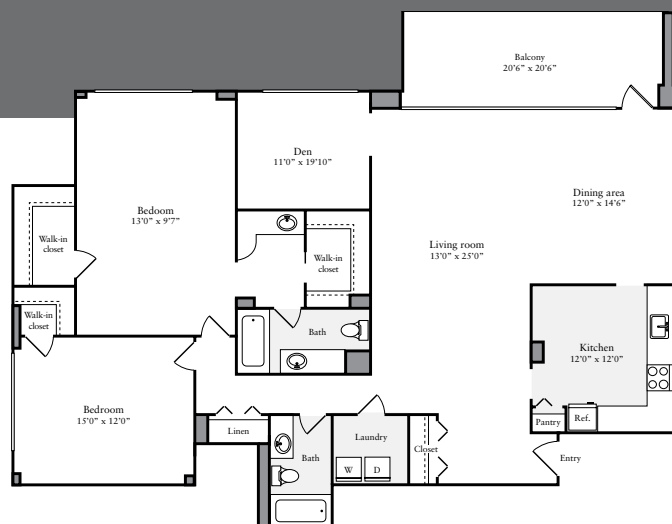
Efficiency
705 square feet



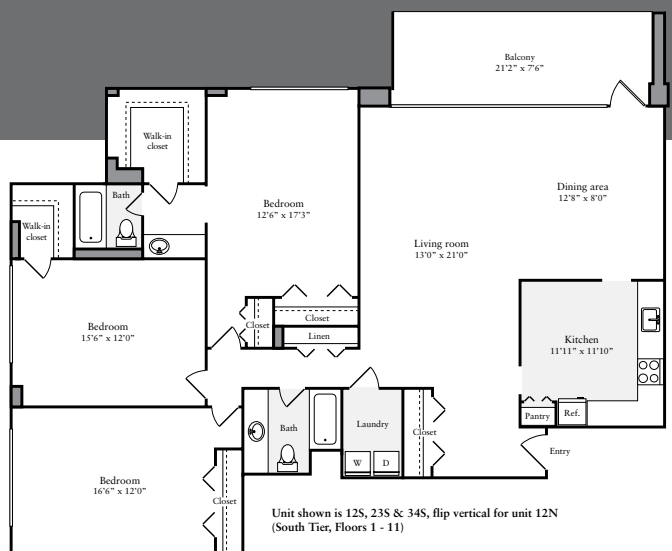
One bedroom / one bath
952 square feet



Two bedroom / two bath
1,293 square feet



Two bedroom / two bath
1,600 square feet



Three bedroom / two bath
1,725 square feet

Unit shown is 12S, 23S & 34S, flip vertical for unit 12N
(South Tier, Floors 1 - 11)

Keeping you happy is our top priority. We call it our Seal of Service.™ You'll probably just call it home.

Online Lease. Visit our web site to check real-time pricing and availability, select an apartment, complete your application and get your lease, in as little as 15 minutes.

Flexible Lease Terms. You choose the length of lease that works for you.

myArchstone.com. Log on to this resident-only web site to pay your rent online, submit and track service requests, take part in periodic feedback surveys – and more!

100% Move-In Satisfaction Guarantee. If you're not completely satisfied with your apartment for any reason, you can move without penalty within the first 30 days of your lease, no questions asked.

1-Day Service Guarantee. Keeping your apartment in excellent condition is a part of our commitment to your satisfaction. When you make a service request we'll respond within 24 hours. Guaranteed.

The Relocation Guarantee. Things happen. You change jobs, fall in love, realize you can't live without the sun (or snow). Whatever the reason, we'll help you find another Archstone apartment. If you need to move out of the area, you'll have peace of mind with the Archstone relocation services.



Proud to be a national sponsor since 1999

A location that's exactly right. Exactly where you want to be.

Immediate access to downtown D.C., major highways
and Ronald Reagan Washington National Airport

Walking distance to world-class shopping, dining
and entertainment

Across the street from the Metro

Getting here

From Virginia: Take I-395 North towards Washington,
D.C. Take Exit 8C (Crystal City/Alexandria/Pentagon City).
Turn left onto Army-Navy Drive. Turn right onto South
Eads Street. Crystal Towers is located on the right.

From Washington, D.C.: Take I-395 South towards
Richmond. Cross over the 14th Street Bridge. Take
Exit 8C (Crystal City/Alexandria/Pentagon City). Turn
right onto 15th Street. Turn left onto South Eads
Street. Crystal Towers is located on the right.

From the Metro: Take the Blue or Yellow Line to
Crystal City stop. Exit towards South Eads Street.
Crystal Towers is located across South Eads Street.



CRYSTAL TOWERS

1600 South Eads Street
Arlington, Virginia 22202

Phone 703.521.1621 Fax 703.892.2541

ctowers@archstonemail.com

Lease online at CrystalTowersApt.com



ARCHSTONE



ArchstoneApartments.com