



ARCHSTONE RUSSETT



Great apartments. Great service. Guaranteed.™

Archstone redefines apartment living by blending uniquely stylish apartments in remarkable cities with high-caliber service delivered by our friendly and professional staff. From our Seal of Service™ to the modern amenities and thoughtful details found throughout our apartment residences, we work relentlessly to ensure your total satisfaction. It won't take long to realize that living with us is easier. More reliable. And notably better. Welcome to a different kind of apartment experience. Welcome home to Archstone.



Welcome to Archstone Russett

Nestled in the heart of a prestigious, planned residential neighborhood, you'll find Archstone Russett, a Georgian-inspired apartment community that offers savvy urbanites the ultimate refuge from a hectic world. Whether you choose an apartment flat or three-story townhome, you'll be wowed by the special touches: angled walls, private garages, formal dining rooms and even gas fireplaces. The location is equally as perfect, with easy access to the area's open space, jogging trails, tennis courts, entertainment and shopping areas – as well as I-95 and the Baltimore-Washington Parkway. Great apartments, great service and the amenities you deserve. All at a location that's exactly right, exactly where you want to be.



Everyone should have a chance to live in an apartment like this at least once in their life.

Apartment features

Townhomes available

Deluxe eat-in kitchens with breakfast bars and pantries*

White-on-white appliances, including frost-free refrigerators with icemakers, gas ovens, microwaves, multi-cycle dishwashers and disposals

Full-sized washers and dryers in every apartment

Spacious floor plans

Oversized closets

Linen closets

Wall-to-wall carpeting

Formal dining rooms*

Designers touches including fireplaces, built-in computer desks and vaulted ceilings

Bathrooms with cultured marble vanities and Hollywood lighting

Huge picture and bay windows

Panoramic views of the Maryland countryside*

Private patios, porches and balconies

Cable ready with high-speed Internet available

Individually metered utilities

* [Select apartments](#)

Community amenities

Exclusive access to myArchstone.com, our resident services web site

Online rent payment

Georgian revival architecture

Clubhouse with country club inspired great room featuring full kitchen, fireplace, media center, dvd library and WiFi

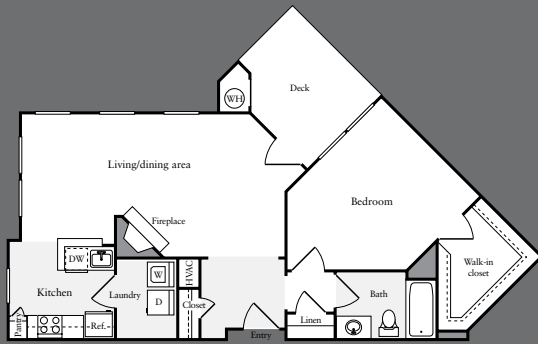
State-of-the-art fitness center with cardio theater equipment

Resort-style pool with sundeck

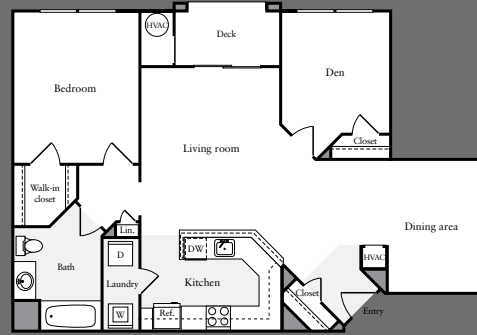
Individual direct access garages with remote control entry

Planned community with beautiful landscaping and open space

Sports field perfect for football, soccer and other field activities



One bedroom / one bath
796 square feet



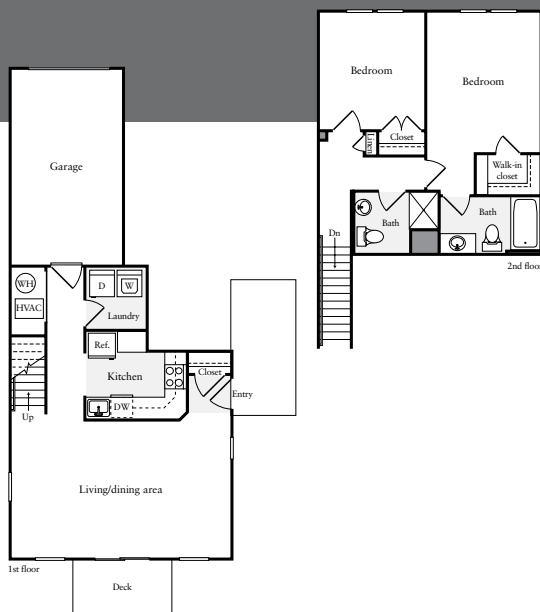
One bedroom with den / one bath
964 square feet



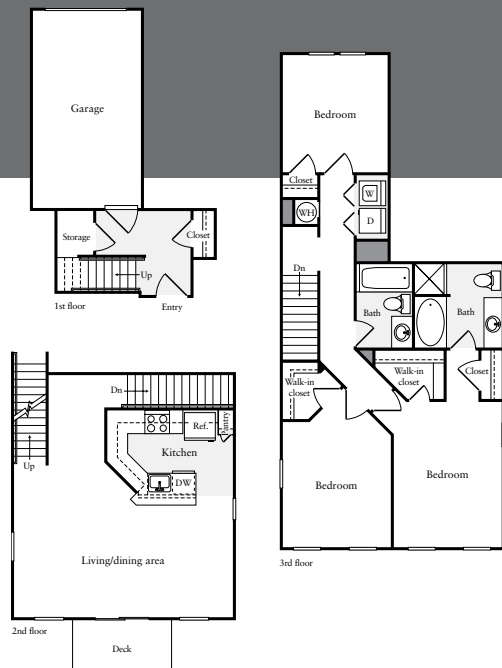
Two bedroom / two bath
1,087 square feet



Two bedroom / two bath
1,193 square feet



Two bedroom townhome / two bath
1,072 square feet



Three bedroom townhome / two bath
1,467 square feet

Keeping you happy is our top priority. We call it our Seal of Service.™ You'll probably just call it home.

Online Lease. Visit our web site to check real-time pricing and availability, select an apartment, complete your application and get your lease, in as little as 15 minutes.

Flexible Lease Terms. You choose the length of lease that works for you.

myArchstone.com. Log on to this resident-only web site to pay your rent online, submit and track service requests, take part in periodic feedback surveys – and more!

100% Move-In Satisfaction Guarantee. If you're not completely satisfied with your apartment for any reason, you can move without penalty within the first 30 days of your lease, no questions asked.

1-Day Service Guarantee. Keeping your apartment in excellent condition is a part of our commitment to your satisfaction. When you make a service request we'll respond within 24 hours. Guaranteed.

The Relocation Guarantee. Things happen. You change jobs, fall in love, realize you can't live without the sun (or snow). Whatever the reason, we'll help you find another Archstone apartment. If you need to move out of the area, you'll have peace of mind with the Archstone relocation services.



Proud to be a national sponsor since 1999

A location that's exactly right. Exactly where you want to be.

Excellent Laurel location, minutes from shopping and dining

Located nearby community tennis courts, biking and jogging trails, Kindercare, a community library, a pavilion with picnic areas and grilling stations and six playgrounds

Close to Oxbow Lake nature preserve

Immediate access to Baltimore-Washington Parkway (I-295) and Baltimore/Washington International Thurgood Marshall Airport

Easy commute to Baltimore or Washington, D.C.

Getting here

From Washington, D.C.: Take I-295 (Anacostia Freeway) north towards Baltimore. Anacostia Freeway becomes Baltimore-Washington Parkway. Take the MD-198 exit and merge west onto Laurel Fort Meade Road/MD-198 W. Turn right on Russett Green East. Turn right on Sagewood Road. Turn left at Scenic Meadow Drive.

From Baltimore: Take I-295 south towards Washington, D.C. Take the MD-198 exit and turn right on Laurel Fort Meade Road/MD-198 W. Turn right on Russett Green East. Turn right on Sagewood Road. Turn left at Scenic Meadow Drive.

ARCHSTONE RUSSETT

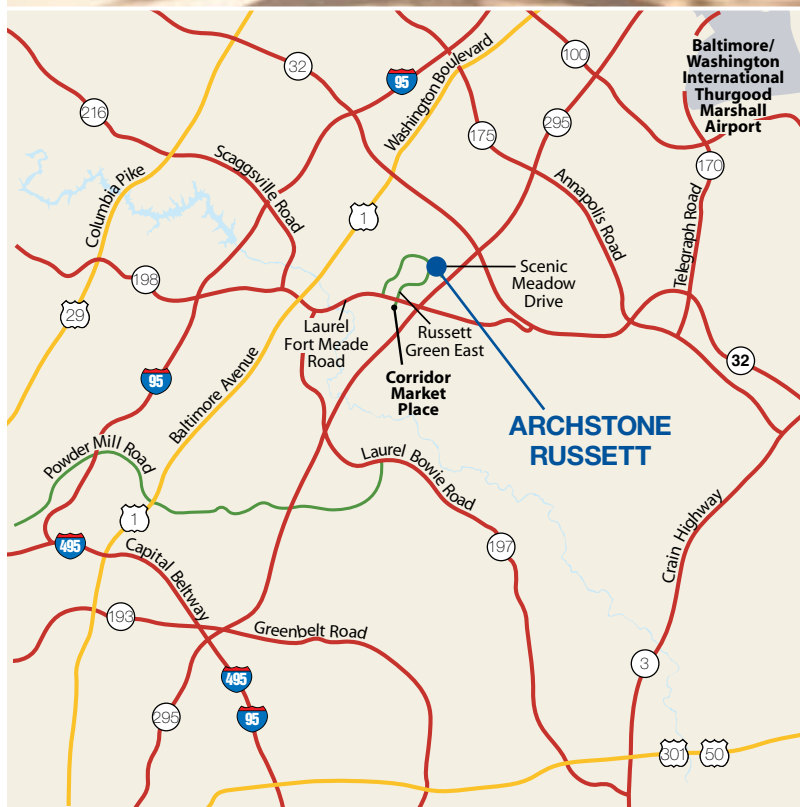
8185 Scenic Meadow Drive

Laurel, Maryland 20724

Phone 301.776.4446 Fax 301.776.4469

russett@archstonemail.com

[Lease Online at ArchstoneRussett.com](http://LeaseOnlineatArchstoneRussett.com)



ARCHSTONE



ArchstoneApartments.com